

Students' Feedback on Curriculum Design and Review 2022

Sonamukhi College, Sonamukhi, Bankura- 722207, W.B.

www.sonamukhicollege.ac.in

naac@sonamukhicollege.ac.in

*** Required**

Email *.....

How much of the syllabus was covered in the class? *

85% to 100%

70% to 84 %

55% to 69%

30% to 54%

Below 30%

How well did the teachers prepare for the classes? *

Thoroughly

Satisfactorily

Poorly

Indifferently

Won't teach at all

How well were the teachers able to communicate? *

Always Effective

Sometimes Effective

Just Satisfactory

Generally Ineffective

Very Poor Communication

The Teaching approach of the teachers can best be described as: *

Excellent

Very Good

Good

Fair

Poor

The institute takes active interest in promoting internship, student exchange, field visit opportunities for students *

Regularly

Often

Sometimes

Rarely

Never

The syllabus provides multiple opportunities to learn and grow *

Strongly Agree

Agree

Neutral

Disagree

Strongly Disagree

Teachers inform you about your expected competencies, course outcomes and programme outcomes *

Every Time

Usually

Occasionally

Rarely

Never

Fairness of the internal evaluation process by the teachers: *

Always fair

Usually fair

Sometimes unfair

Usually unfair

Unfair

**The syllabi/curricula framed by the university are student centric, such as experiential learning, participative learning and problem solving for enhancing learning experiences
To a great extent**

Moderate

Some what

Very little

Not at all

What percentage of teachers use ICT tools (LCD Projectors, Muti media etc.) while teaching *

Above 90%

70 - 89%

50 - 69%

30 - 49%

Below 30%

The overall quality of the teaching learning process in your Institute is very good. *

Strongly agree

Agree

Neutral

Disagree

Strongly disagree

The syllabi/ curricula give the opportunity to a student to prepare himself/herself for a suitable job *

To a great extent
Moderate
Some what
Very little
Not at all

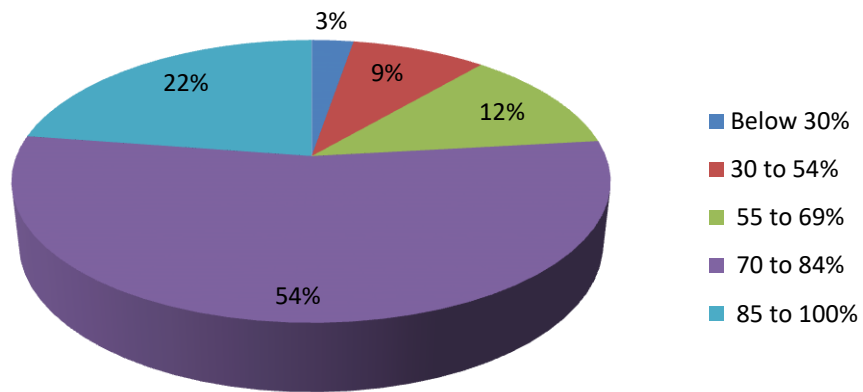
Teachers encourage you to participate in extra curricular activities. *

Strongly agree
Agree
Neutral
Disagree
Strongly disagree

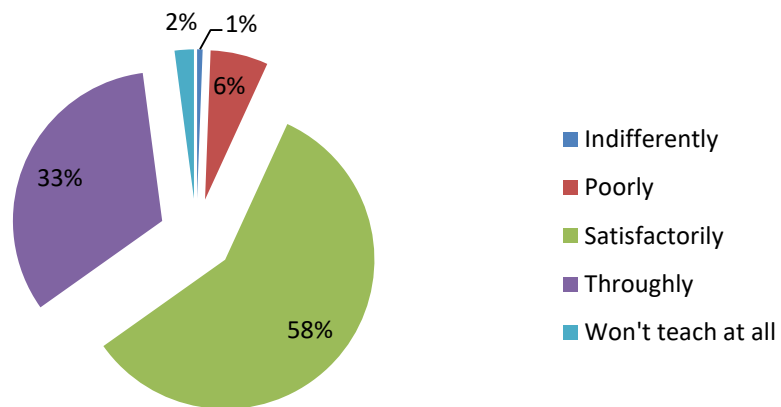
The contents of the curriculum are in tune with the state/national level examinations in the relevant subject *

Strongly agree
Agree
Neutral
Disagree
Strongly disagree

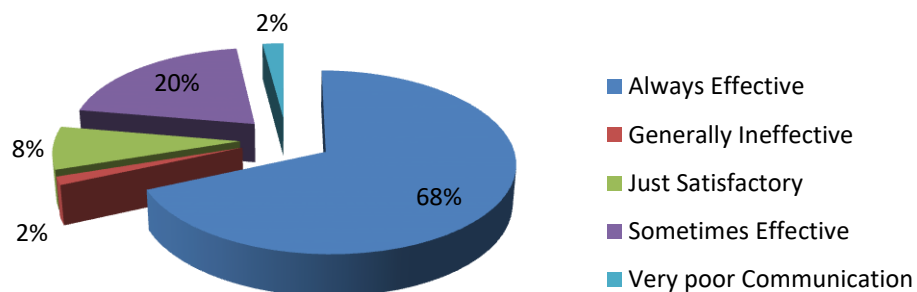
The syllabus was covered in the class



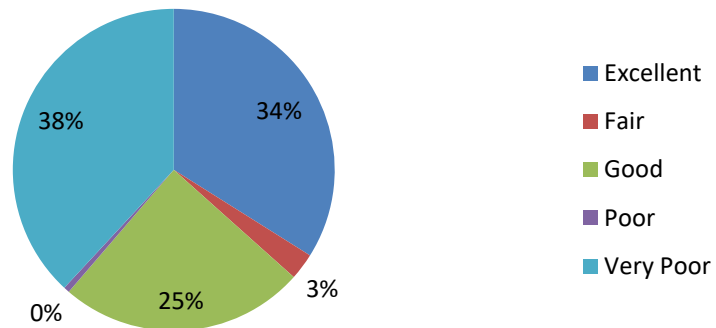
The teachers prepare for the classes



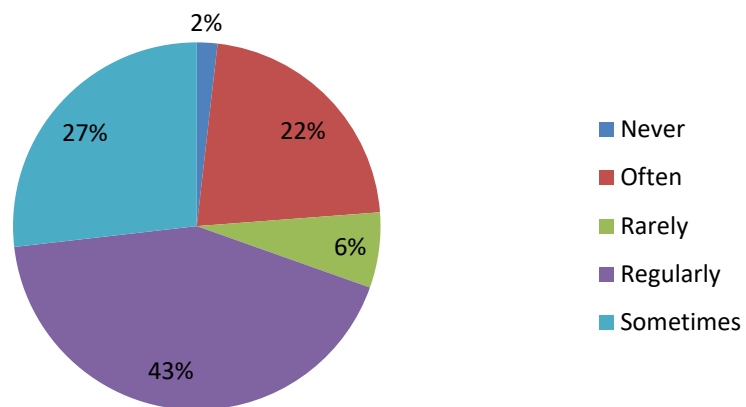
The teachers able to communicate



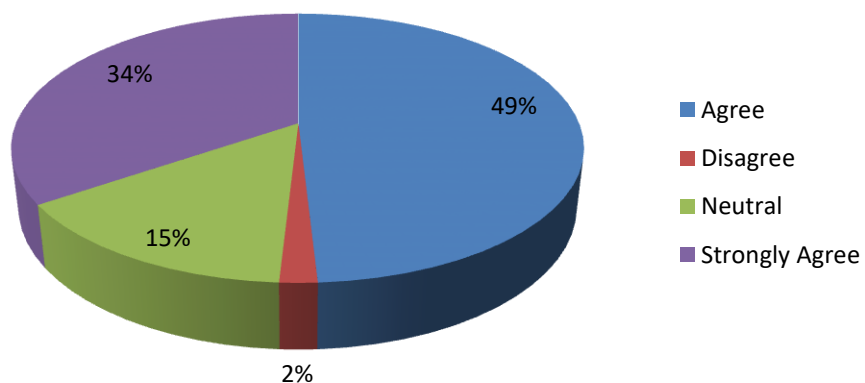
The Teaching approach of the teachers can best be described



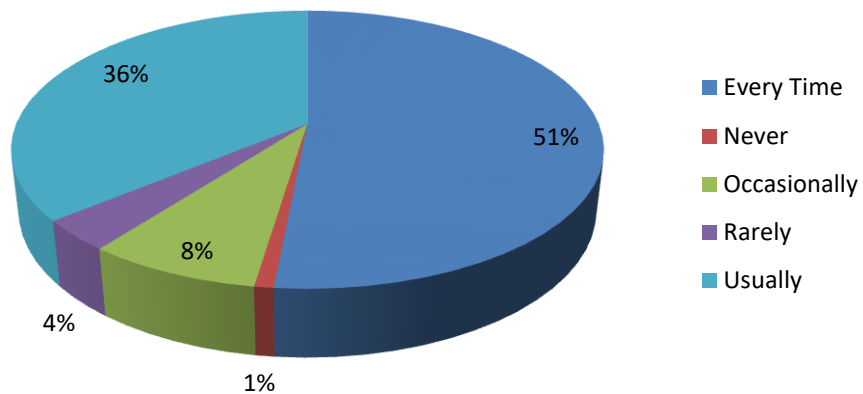
The institute takes active interest in promoting internship, student exchange, field visit opportunities for students



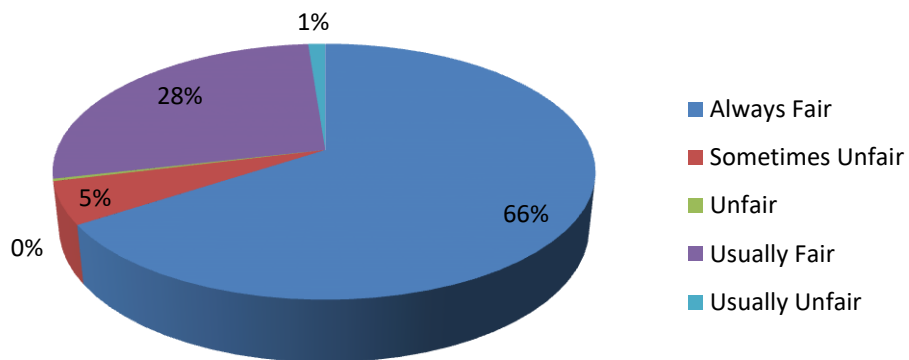
The syllabus provides multiple opportunities to learn and grow



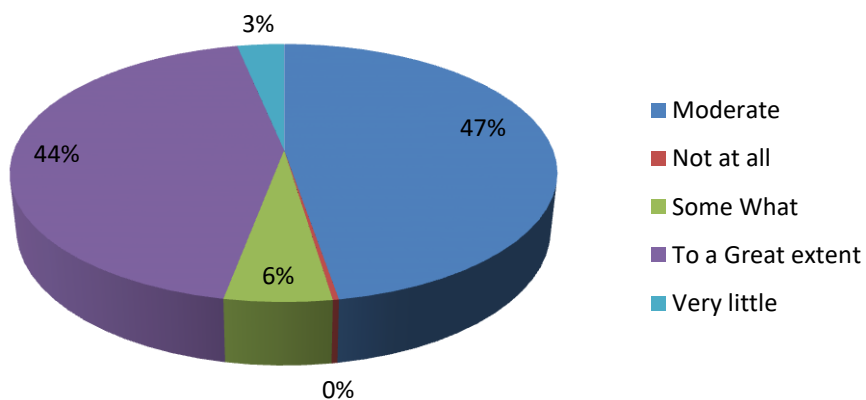
Teachers inform you about your expected competencies, course outcomes and programme outcomes



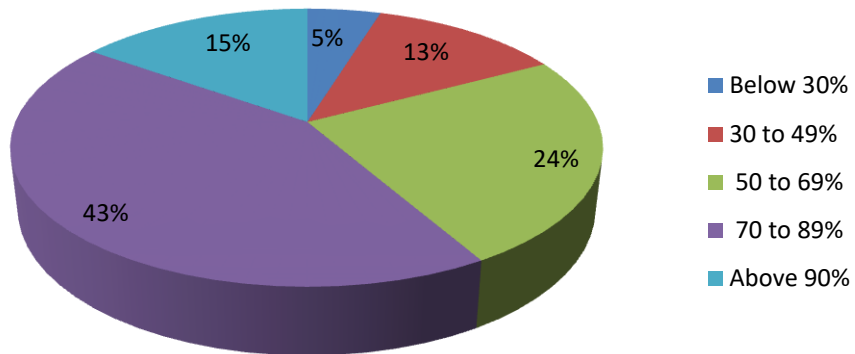
Fairness of the internal evaluation process by the teachers



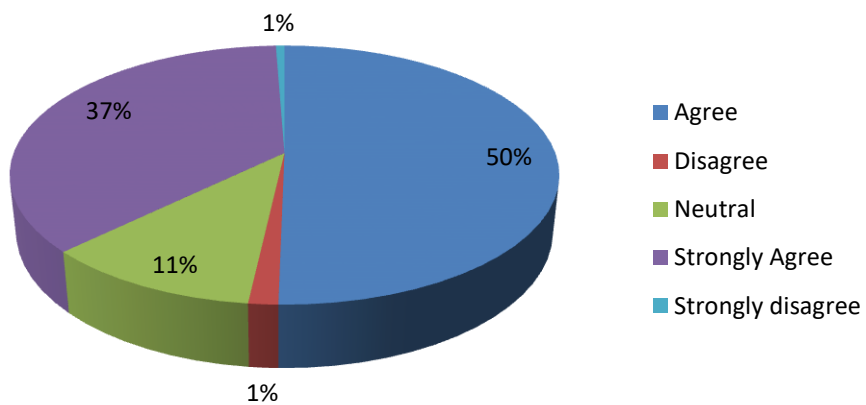
The syllabi/curricula framed by the university are student centric, such as experiential learning, participative learning and problem solving for enhancing learning experiences



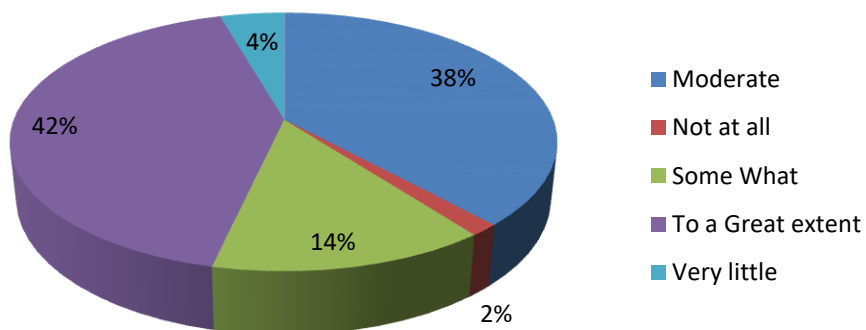
Teachers use ICT tools (LCD Projectors, Muti media etc.) while teaching



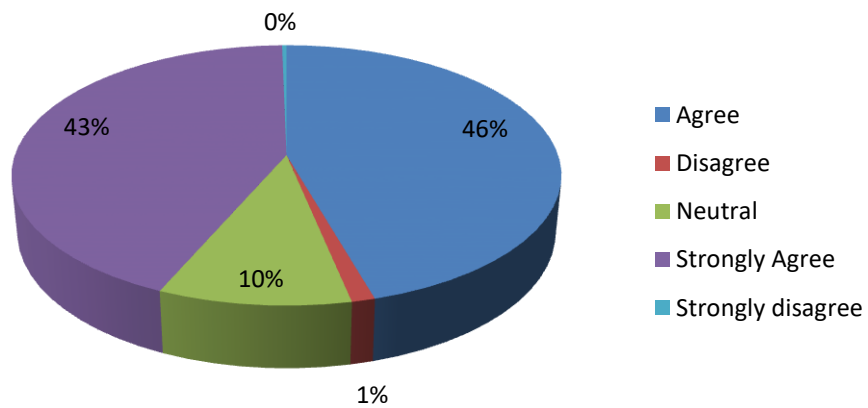
The overall quality of the teaching learning process in your Institute is very good



The syllabi/ curricula give the opportunity to a studentto prepare himself/herself for a suitable job



Teachers encourage you to participate in extra curricular activities



The contents of the curriculum are in tune with the state/national level examinations in the relevant subject

